

PVC-U Panel Door

C O L L E C T I O N



WILTSHIRE

WINDOWS



The Perfect Finish

When you buy a PVCu infill panel for your front door, you can rest assured you are investing in a quality product. PVCu doors are low maintenance and secure.

Every door is available in white or woodgrain effects, Rosewood, Light Oak, Mahogany or Irish Oak. All woodgrain options are finely crafted to look realistic, but unlike wood they are guaranteed not to crack, peel or fade; so you can create the warmth that wood offers, without the hassle. There is also a new range of foiled colours such as the popular Anthracite Grey and Chartwell Green. You can also combine white and woodgrain finishes, so for example, you could have woodgrain on the outside to match the exterior features of your home, and white on the inside providing you with a neutral finish for your interior.

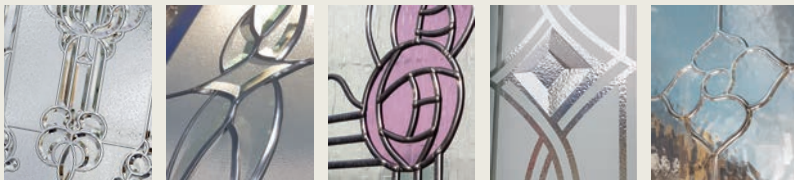
All glass is toughened (kite mark bs6206) and all door panels meet class 1 surface spread of flame classification BS476 part 7. Due to the nature of the product, no liability can be accepted for the accuracy of colours or designs shown which are intended for guidance only. All the door panels in this range comprise of two PVCu skins, pressure bonded to a core material of E.H.D.F.R. A polystyrene (extra high density fire retardant additive) using a specially formulated adhesive that is both heat and moisture resistant. The result is a core free from CFCs and a skin that is approved to BS476:part12 'Method of Test for Ignitability of Products by Direct Flame Impingement'. This offers a high degree of thermal efficiency and, by using our range of reinforcing options, a high degree of security.

Foiled Colour Options



* Nearest match. RAL numbers are given in good faith but are for reference only we take no responsibility for other materials not matching our finish.

Glazing Options



Resin Bevel (BP) - No backing glass option available ▲

Using the most advanced technology, this range of resin bevel effect designs has been introduced to complement our existing wide range of glass patterns. Each design is carefully sealed between two panes of glass for ease of cleaning. The glass will not shatter like ordinary door glass but will hold together even if broken. This reduces outside noise pollution. Each resin is obscure and the design will occasionally produce minor imperfections that are generally regarded as acceptable. The resin is glazed on the inside piece of glass facing outwards.

Bevelled Glass (DB)

Traditional handcrafted and bonded to the glass with an optically clear resin then overlaid with lead. These classic and timeless designs will compliment that period home.

Stained Units (CD) (CL)

Combining traditional lead work with coloured film, these designs replicate that stained glass appearance. All stained units are individually hand made and the coloured film may at times, vary slightly from the computer generated brochure.

Sandblasted / Etched Glass (TD) (DB)

This handcrafted glass is now produced using modern technology and is designed to give a traditional appearance. For a more dramatic effect, this is often combined with striking glass bevels. Though generally obscure, it does leave various areas clear.

Silver Grille (DB)

Our Silver Grille options feature attractive traditional motifs that are created using a highly polished chrome framework that is sealed within the double glazed units. Each Silver Grille design is available with a choice of backing glass.



Top Tips

Clean your door about every four months with a non-abrasive cleaner to remove any grime and atmospheric deposits.

To clean your glass, use a soft cloth with soap and water. Avoid excessive pressure when cleaning leaded glass.

Lubricate locks and hardware as required using a light machine oil such as WD40. This will ensure your door continues to function smoothly and quietly.

Victorian

PVC-U Panel Doors



Victorian with Cobalt Glass (BP)



Victorian in Chartwell Green with Rennie Argyle Glass (CD)



Victorian with Fused Grille Glass (DB)



Victorian with Tinted Emerald Glass (DB)



Victorian with DB1 Glass (DB)



Victorian with Ruby Glass (BP)

Victorian

PVC-U Panel Doors



Victorian with Silver Grille Glass (DB)



Victorian with Georgian Bar Glass



Victorian with Glazed Glass



Victorian Solid



Victorian with Briar Glass (CD) and Matching Side Panel



Victorian with Glazed Glass and Side Panel

For our full range of door hardware see P23



Windsor

PVC-U Panel Doors



Windsor in Anthracite Grey with DB4 Glass



Windsor with Bevel Cluster Glass (DB)



Windsor with Emerald Jewel Glass (DB)



Windsor with CL5 Glass



Windsor with Climbing Rose Glass (CD)



Windsor with Floral Urn Etched Glass (TD)

Windsor

PVC-U Panel Doors



Windsor with Sapphire Twist Glass (DB)



Windsor with Diamond Lead Glass



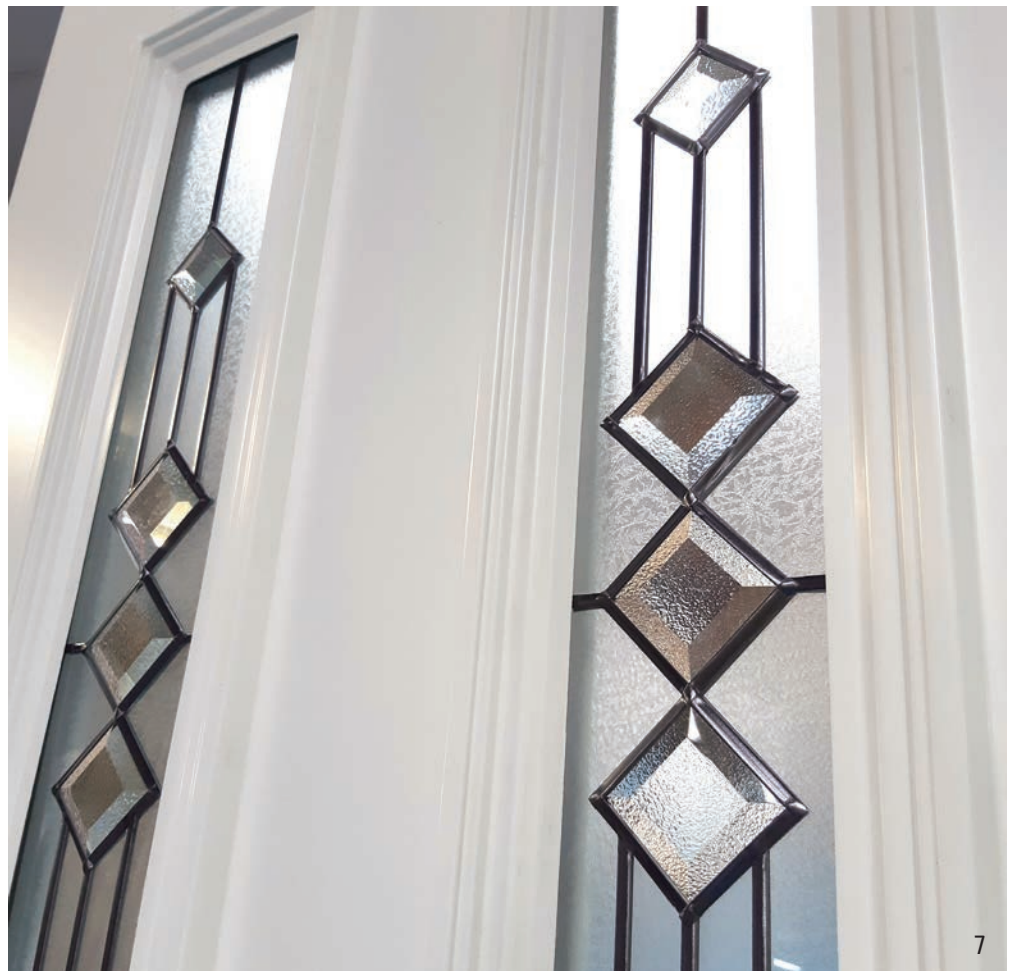
Windsor with Glazed Glass



Windsor Solid



Windsor in Black with Atria Glass (DB)



Georgian 1

PVC-U Panel Doors



Georgian 1 with House No/Leaves Glass (CD)



Georgian 1 in Chartwell Green with Clear Elegance Glass (DB)



Georgian 1 with DB8 Glass (CD)



Georgian 1 with CL5 Glass



Georgian 1 with Georgian Bar Glass



Georgian 1 with Glazed Glass



Georgian 3 with Clear Elegance Glass (DB)



Georgian 3 with DB8 Glass



Georgian 3 with CLS Glass



Georgian 3 with Glazed Glass

Georgian 3

PVC-U Panel Doors



Georgian 3 in Red with Sirius Glass (DB)



Georgian 3 with Georgian Bar Glass and Side Panel

Monaco

PVC-U Panel Doors



Monaco in Chartwell Green with Bevel Cluster Glass (DB)



Monaco with DB1 Glass (DB) ▲



Monaco with Climbing Rose Glass (CD)



Monaco with Atria Glass (DB)



Monaco with BPS Green Glass



Monaco with Glazed Glass



Devon with Fused Blue Glass (DB)



Devon with Neptune Glass (BP) ▲



Devon with Wild Rose Glass (CD)



Devon with Floral Jewel Glass (BP) ▲

Devon

PVC-U Panel Doors



Devon in Light Oak with Venus Glass (BP) ▲



Devon with Royal Bevel Glass (DB)



Jacobean

PVC-U Panel Doors



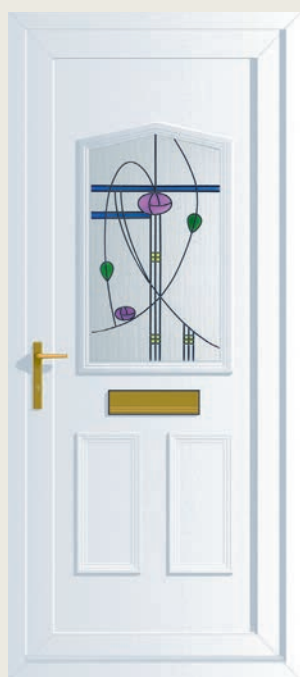
Jacobean in Anthracite Grey with Silver Grille Glass (DB)



Jacobean with Bevel A Glass (DB)



Jacobean with CL2 Glass



Jacobean with Rennie Moray Glass (CD)



Jacobean with Bevel F Coloured Glass



Jacobean with Glazed Glass



Cornwall with CD9 Glass



Cornwall with Blue Border Glass (CD)



Cornwall with Glazed Glass



Cornwall Solid

Cornwall

PVC-U Panel Doors



Cornwall in Chartwell Green with Bullion Glass (CD)



Cornwall with DB68 Glass

Edwardian 2 & 4

PVC-U Panel Doors



Edwardian 4 in Cream with Bevel G Glass (DB)



Edwardian 4 with Climbing Rose Glass (CD)



Edwardian 4 with DB1 Glass



Edwardian 2 with Glazed Glass



Edwardian Solid



Bordeaux with CL2 Glass



Quebec with CD21 Glass



Quebec with CD30 Glass



Quebec with Georgian Bar Glass

Bordeaux & Quebec

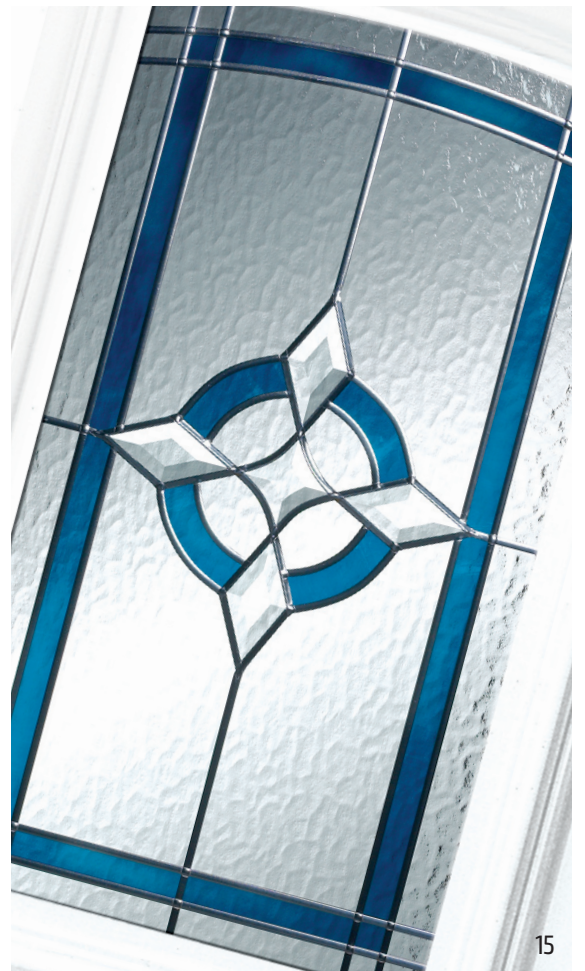
PVC-U Panel Doors



Bordeaux in Anthracite Grey with BP1 Glass



Quebec with DB1 Glass



Warwick

PVC-U Panel Doors



Warwick in Chartwell Green with Aquarius Glass ▲



Warwick with CD21 Glass



Warwick with House No/Roses Glass (CD)



Warwick with CD33 Glass



Warwick with Diamond Lead Glass



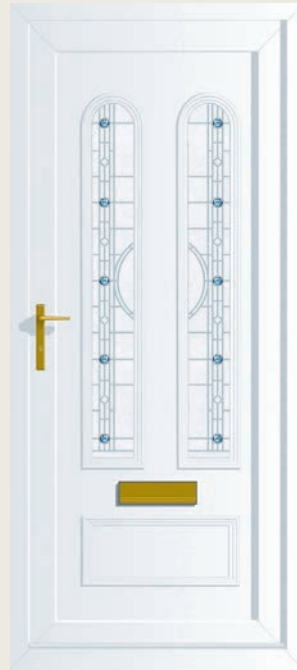
Warwick with Glazed Glass



Cambridge with Fused Blue Glass (DB)



Cambridge with Aqua Petal Glass (DB)



Cambridge with Aqua Jewel Glass (DB)



Cambridge with Block Lead Glass

Cambridge

PVC-U Panel Doors



Cambridge in Irish Oak with DB1 Glass



Cambridge with Bevel Cluster Glass (DB)

Back Door

PVC-U Panel Doors



Back Door with Glazed Glass



Back Door with Georgian Bar Glass



Back Door with CD21 Glass



Back Door with Square Lead Glass



Back Door with Diamond Lead Glass



Back Door Solid



Amatis Collection

PVC-U Panel Doors

Stylish inverse moulding is the latest feature to be introduced to the PVC-U panel door and has proved to be popular with home owners, which is why we have extended our range to provide you with even more styles to choose from.

On most PVC-U doors, the mouldings are raised from the door. However, with the Amatis inverse collection, the mouldings recess into the door. This creates a more elegant, slimline look that

resembles the traditional carved lines of timber, but still has the low maintenance benefits of PVC-U so you get the best of both worlds.

York & Toulouse

Amatis PVC-U Panel Doors



York in Chartwell Green with CL4 Glass



Toulouse 3 with CL4 Glass



York with DB4 Glass



York with Glazed Glass



Toulouse 1 with CD12 Glass



Toulouse 1 with Georgian Bar Glass



Xanthi with Glazed Glass



Verona with CD50 Glass



Verona with CL1 Glass



Verona Solid

Xanthi & Verona

Amatis PVC-U Panel Doors



Xanthi in Light Oak with CL4 Glass



Verona with BP11 Glass

Side Panels



Victorian

Edwardian

Georgian

Cambridge

Bordeaux

Half, Quarter & Conservatory Panels

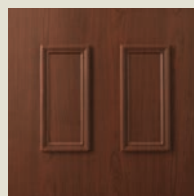
All panels are available in all colour options.



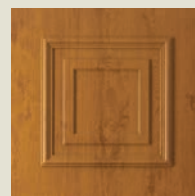
Victorian Half Panel



Edwardian Half Panel



HPU-1



HPU-2



Royale Half Panel



Regency Half Panel



HPU-7



HPU-9



Edwardian CEP



HPU-10



Victorian Quarter Panel



Edwardian Quarter Panel



Lancaster CLP



Shiplap

Hardware Options

Letterplates



Black Gold Chrome Silver White

Urns



Black Gold Chrome Silver White

Spyholes



Black Gold Chrome White

Numbers and Letters (A-D Only)



Black Gold Chrome

Textured Glass Options

* Glass names are the trademark of Pilkington plc. Images are copyright of Pilkington plc. and reproduced by courtesy.
** Satin Glass incurs a surcharge.



Arctic* Autumn* Chantilly* Charcoal* Contura* Cotswold*
Digital* Everglade* Flemish* Florielle* Mayflower* Minster*
Oak* Pelerine* Stippolyte* Sycamore* Taffeta* Satin**

